



Advinion

Copyright © 2020

HTML5 ProChart V6.x Help

Help Manual V2.0

– Advinion Ltd.

www.Advinion.com

Chart's Site: www.prochartview.com

Customer Support

info@prochartview.com

**TABLE OF CONTENTS**

1. Introduction.....	3
1.1. Remark	3
1.2. Symbol	3
1.3. Panel	3
1.4. Plugins.....	4
1.5. Form transparency control	5
1.6. Future values	6
2. Menu and Toolbar.....	7
2.1. Majors.....	7
2.2. Price Types.....	9
2.3. Time Scales	10
2.4. Indicators.....	11
2.5. Symbol Comparison.....	14
2.6. Themes	17
2.7. Additional Toolbar Actions.....	18
2.8. Toolbox	21
3. Chart Sections	25
3.1. Symbol and Time-Scale	25
3.2. Last Update Time	25
3.3. Localization.....	25
3.4. Zoom Control	26
4. Panels	27
4.1. Title	27
4.2. Panel Ordering and Resizing.....	27
4.3. Splitter	27
4.4. Crosshair.....	28
5. Technical Drawing.....	29
5.1. Drawing a Shape	29
5.2. Selecting a Shape	29
5.3. Move or Resize.....	29
5.4. Edit	30
6. More Chart Actions.....	32
6.1. Horizontal Zooming	32
6.2. Vertical Zooming	32
6.3. Horizontal Moving	32
6.4. Vertical Moving	32



1. Introduction

This document provides a detailed overview of Advinion HTML5 ProChart Version 6.X charting solution features and usage.



1.1. Remark

The UI is customizable and each implementation may be different from other implementations. This help document covers the entire possible chart's features, however some features may not appear or may look different in your chart you use due to customization.

1.2. Symbol

This document uses the word "Symbol" to describe a single security or asset, where a security is a fungible, negotiable instrument representing financial value. Securities are broadly categorized into debt securities (such as banknotes, bonds and debentures), equity securities; e.g., common stocks, and derivative (finance) contracts such as forwards, futures, options and swaps...

1.3. Panel

The chart display area is composed of one or more panels. Each panel displays a group of studies, or external data (Plugin). The basic chart displays a single panel showing only the price. An example for a more advance display may have a panel with price graph and two panels, one for RSI studies group (RSI and its moving average) and the second for MACD studies group. Each panel can display more than one study type.



1.4. *Plugins*

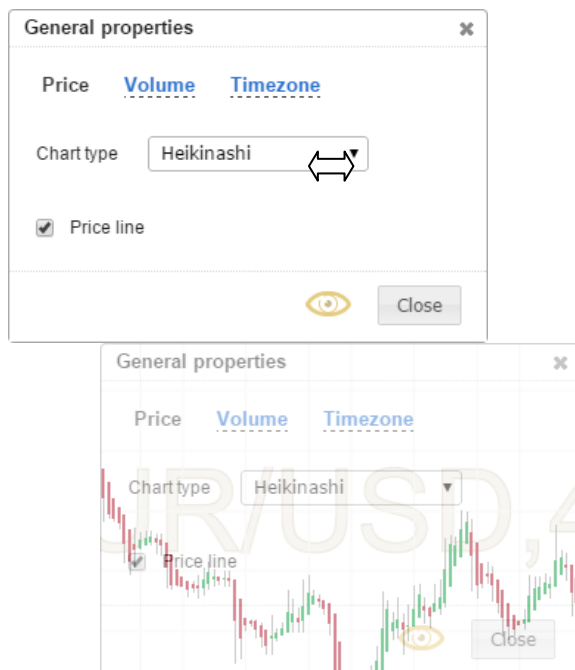
External modules, enriching the Chart's content by using 3rd party or internal calculations or servers.

An example can be 3rd party signals or patterns recognition.



1.5. Form transparency control

Each form has a common button,  which toggles the form transparency state from complete opaque to semi transparent. In semi transparent mode you will be able to see the graphics underneath the form while editing.

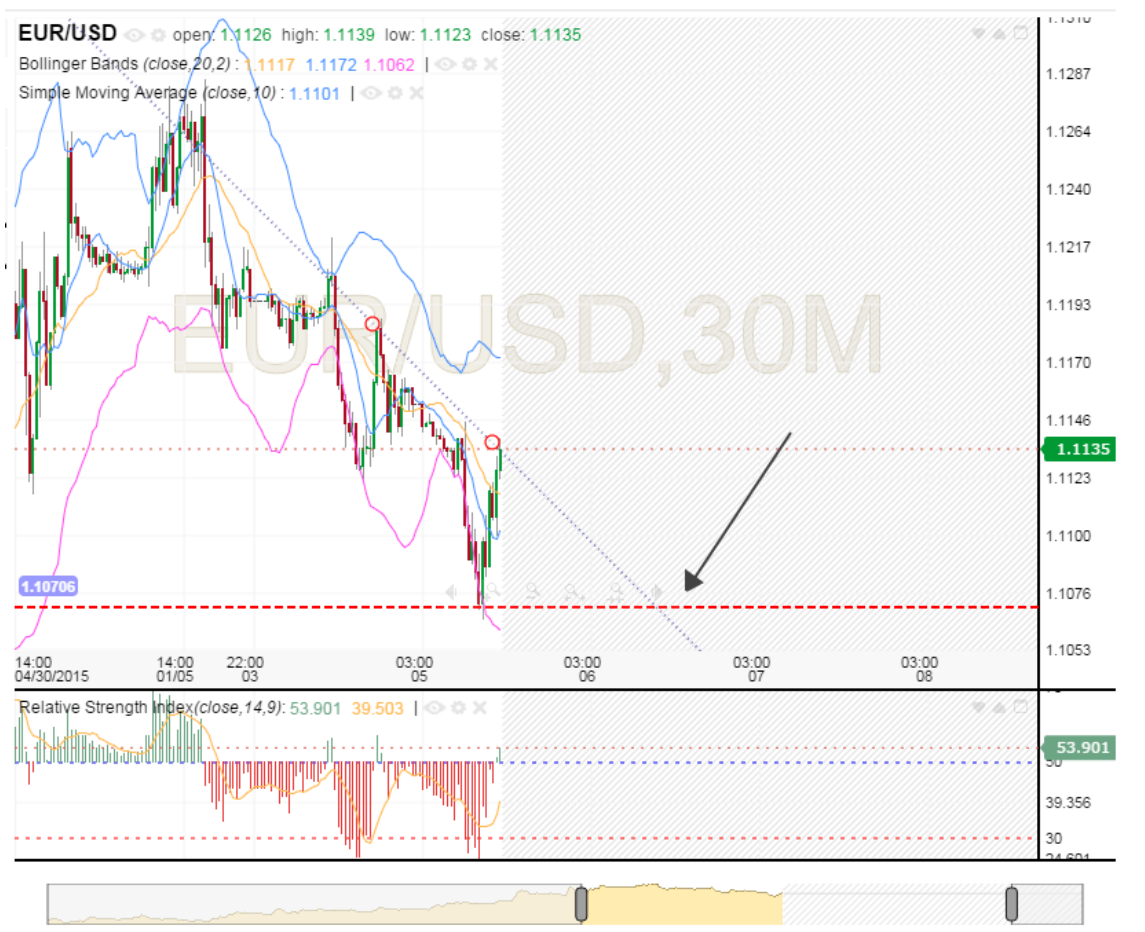




1.6. Future values

Starting at Version 6.0 the Chart enables viewing virtual future area, which means dates after the last candle. This feature let you analyze technical drawing and shapes which can project a future possible price or study movement.

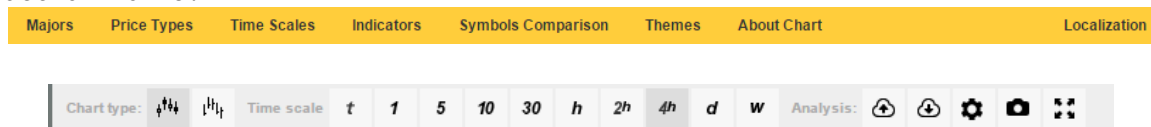
Both the panels and the zoom-control will mark the future area with special color or texture to distinguish from regular time range.





2. Menu and Toolbar

This section describes the chart's menu and toolbar, including the relevant action forms.



2.1. Majors



This menu contains the web-site / platform recommended symbols. Use this menu to quickly access major symbols.



2.1.1. More Majors

The "More Majors..." menu opens the symbol browsing form.

Symbols

Majors
Compares
Search

Search eu

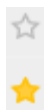
Majors [Compare](#)


☆	AUD/EUR	Australian Dollar vs Euro	↔
☆	CAD/EUR	Canadian Dollar vs Euro	↔
☆	CHF/EUR	Swiss Franc vs Euro	↔
☆	CNY/EUR	Yuan Renminbi vs Euro	↔
☆	CZK/EUR	Czech Koruna vs Euro	↔
☆	DKK/EUR	Danish Krone vs Euro	↔
☆	EUR/AUD	Euro vs Australian Dollar	↔
☆	EUR/CAD	Euro vs Canadian Dollar	↔
☆	EUR/CHF	Euro vs Swiss Franc	↔
☆	EUR/CNY	Euro vs Yuan Renminbi	↔
☆	EUR/CZK	Euro vs Czech Koruna	↔
☆	EUR/DKK	Euro vs Danish Krone	↔
☆	EUR/GBP	Euro vs Pound Sterling	↔
☆	EUR/HKD	Euro vs Hong Kong Dollar	↔

Close

Typing a symbol name into the "search" criteria box will display the top most matching symbols.

Clicking a button to the right of a symbol will set it as the chart's main symbol.



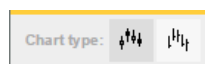
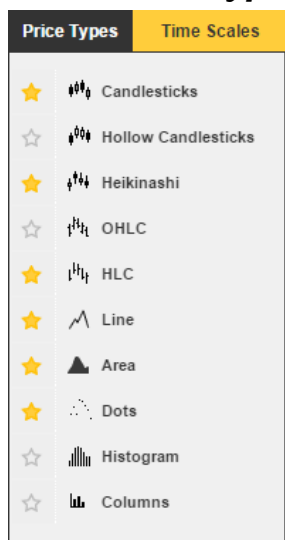
Pressing the favorite button () will add/remove the symbol shortcut from the majors menu.

By selecting the "Compare" tab you can view the list of symbol, available for comparison with the main symbol. Selected and adding a symbol will render it on top of the main symbol.

The Chart will switch to percent mode where price values will show as percentage in the price axis.




2.2. Price Types



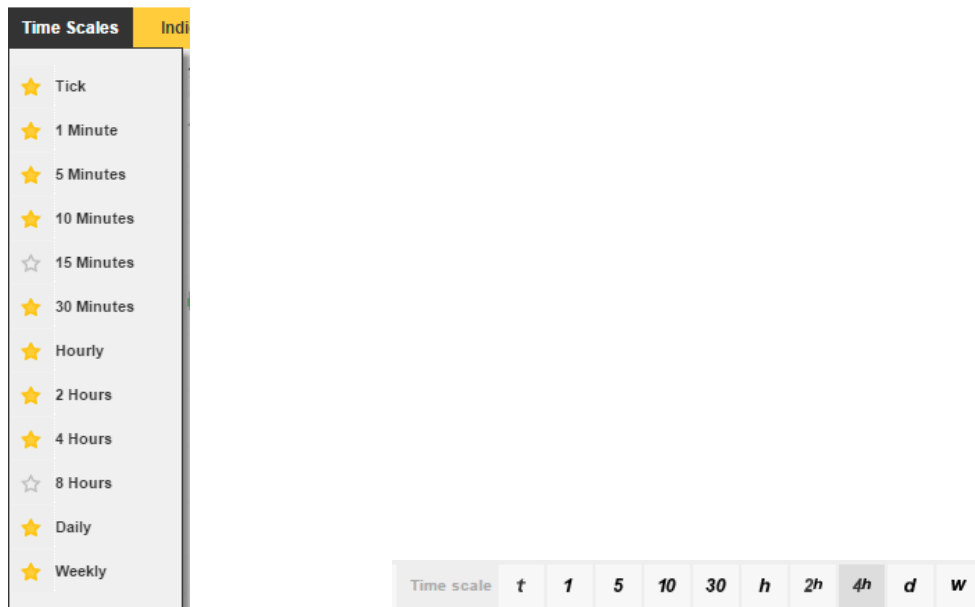
Use this menu to access all the available price types.



Pressing the favorite button () will add/remove the price-type shortcut from the toolbar.




2.3. Time Scales



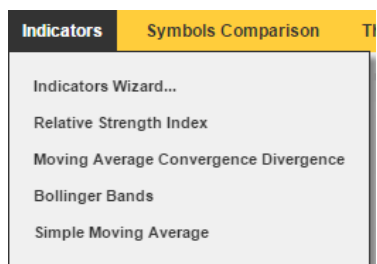
Use this menu to access all the available time-scales. You can view the chart in several groups of minutes and hours, days, weeks and months.



Pressing the favorite button () will add/remove the time-scale shortcut from the toolbar.



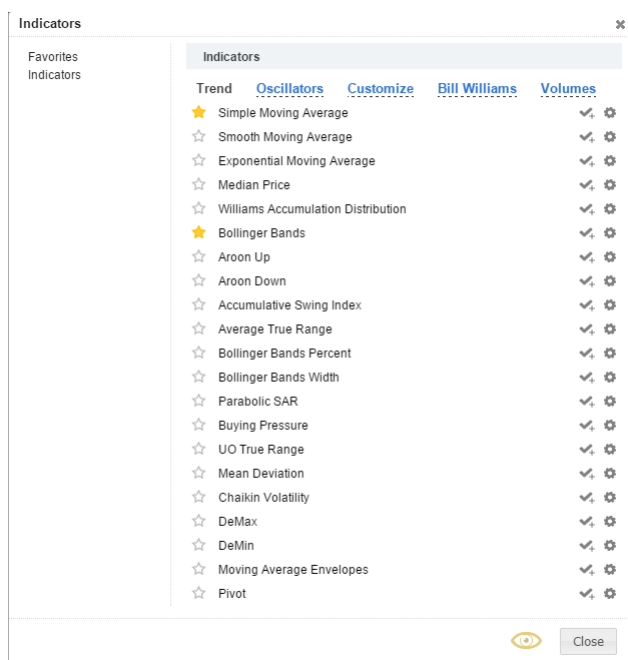
2.4. Indicators



Use this menu to access all the available indicators. The menu contains shortcuts to the major & favorite indicators, while the "Indicators wizard..." menu opens a form to add and customize indicators.


2.4.1. Indicators wizard


The "Indicators wizard..." menu opens the following form.




The form contains the full list of indicators, grouped into several types.



Pressing the favorite button () will add/remove the indicator shortcut to the indicators menu.

Pressing the "add" button () will add the indicator with the default parameters and style.

Pressing the "configure and add" button () will switch open the "New Indicator" form with the selected indicator default values and style.

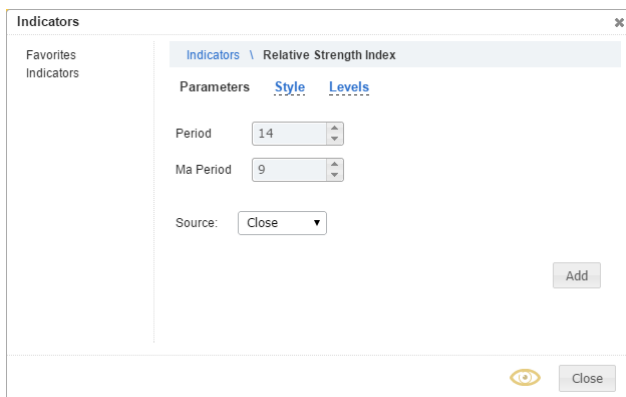
2.4.2. New Indicator / Edit Indicator

You can use this form to add new indicators or edit existing ones. It has three tabs, Parameters, Style and Levels.

Pressing the "add" button (regardless of the current tab) will add the indicator to the Chart. The form will switch to edit mode, showing the indicator you just added.

Press the "Indicators" link at the title will switch back to the indicators list display.

2.4.3. Indicator Configuration - Parameters

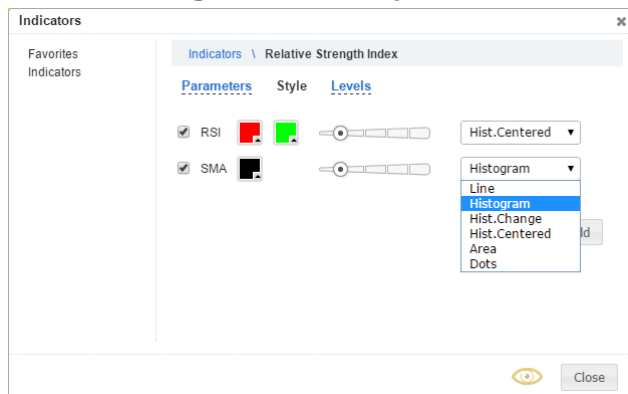


The screenshot shows a dialog box titled "Indicators" with a close button (X) in the top right corner. On the left, there is a sidebar with "Favorites" and "Indicators" sections. The main area is titled "Indicators \ Relative Strength Index" and has three tabs: "Parameters" (selected), "Style", and "Levels". Under the "Parameters" tab, there are three input fields: "Period" with a value of 14, "Ma Period" with a value of 9, and "Source" with a dropdown menu set to "Close". An "Add" button is located at the bottom right of the main area. At the bottom of the dialog box, there is a yellow eye icon and a "Close" button.

In this tab you can edit the indicator's parameters, such as periods, source etc...

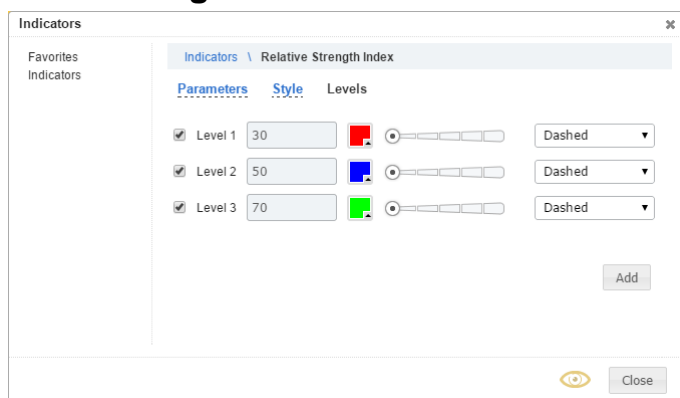
The parameters tab won't appear for indicators with only build in parameters.

2.4.4. Configuration - Style



In this tab you can edit the indicator's style, such as colors, lines width, transparency, indicator drawing style etc...

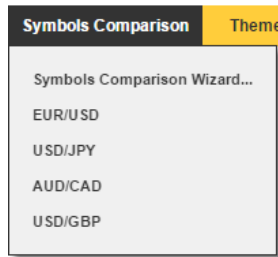
2.4.5. Configuration - Levels



Some indicators have special values which are called levels. These levels represent a special value or area of the entire indicator's range with significant importance, such as oversold or overbought. In this tab you can edit these levels values and style.



2.5. Symbol Comparison



This menu contains the web-site / platform a list of recommended or mostly used symbols. Use this menu to quickly compare them with the main price.

After adding the first symbol the Chart will switch to percentage view and display the price values as percentage. Per each symbol the percentage is calculated based on the change from the left most visible symbol's price.

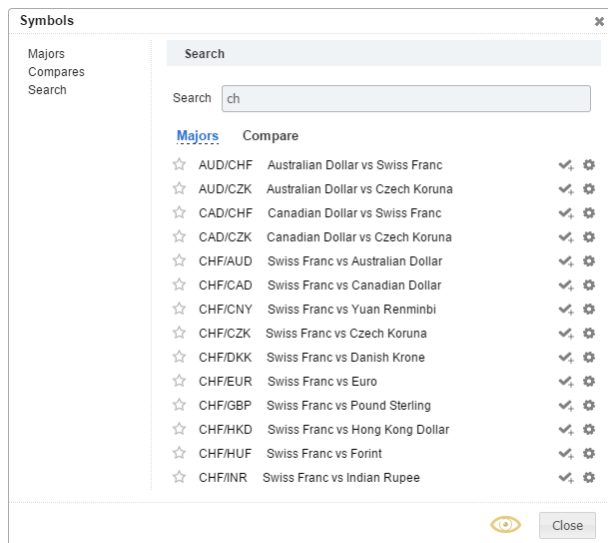


All the indicators will use the main price as their source.





2.5.1. Symbol Comparison Wizard

The "Symbol Comparison Wizard..." menu opens the symbol browsing form.




Typing a symbol name into the "search" criteria box will display the top most matching symbols.

Pressing the "add" button () will add the symbol for comparison with the default style.

Pressing the "add with configuration" button () will open a form to configure the symbol's style before adding it. Within the edit display, pressing the "Search" link in the title will switch back to symbols list display.

If you'll select the "Majors" tab then the selected symbol will replace the main price.



Pressing the favorite button () will add/remove the symbol shortcut from the symbols compare menu.



2.5.2. Compared Symbol Style

Symbols

Majors

Compares

Search

Search \ AUD/CHF Australian Dollar vs Swiss Franc

Chart type Line

Line ☒ ☐ ☐ ☐

Add

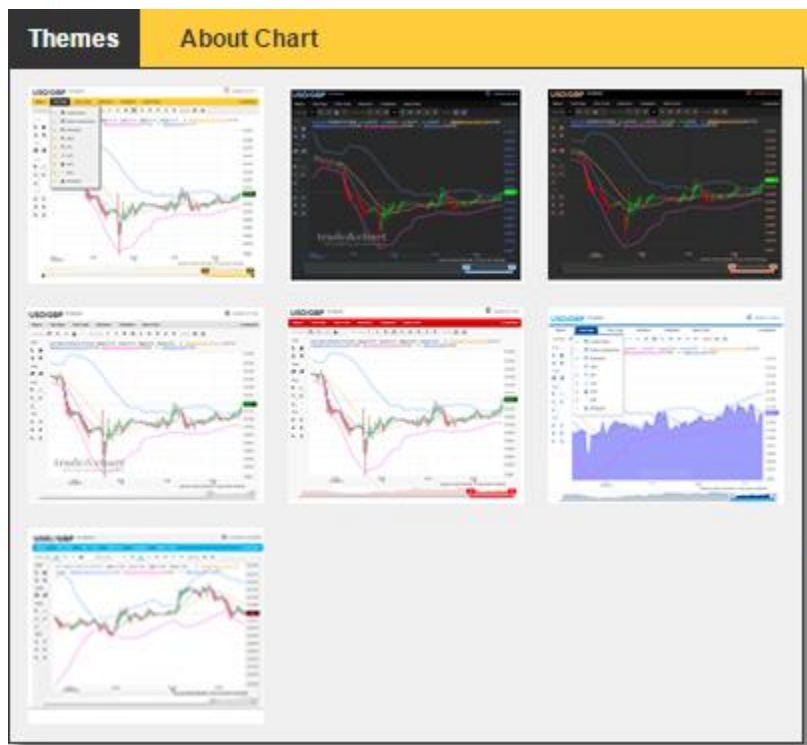
Close

In this form you can edit the compared symbol's style, such as colors, lines width, transparency, drawing style etc...

Press the "add" button to add the symbol to the Chart.





2.6. Themes



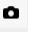
This menu contains the web-site / platform selected color themes. Pressing a theme will change the chart's style accordingly.


2.7. Additional Toolbar Actions



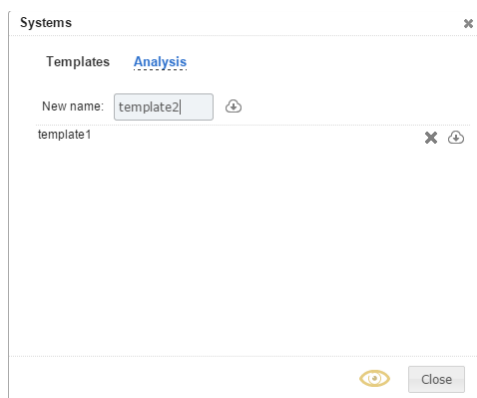
The analysis buttons ( ) opens the Open/Save analysis forms for managing the on chart studies and drawing templates.

The global configuration button () opens the configuration form for managing the chart and price parameters.

The screen-shot button () opens a form containing the chart exported screenshot as a PNG image.

The full-page button () resizes the chart to occupy the entire containing page's size.

2.7.1. Save Template / Analysis



This form let you save your current chart studies and drawings, including their parameters and styles in order to use them later.

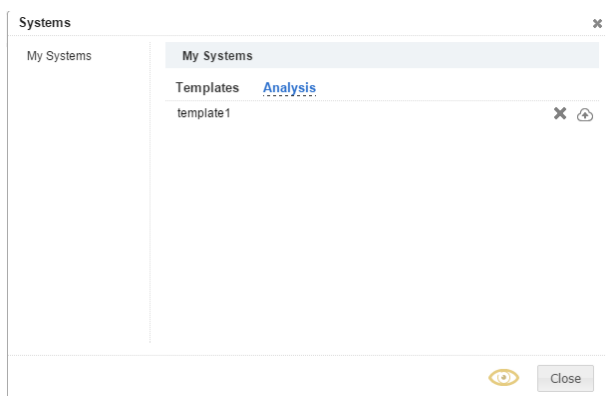
A **Template** stores only the studies and drawings, while **Analysis** also saves the current symbol and time-scale.

Type a name into the name box and press the save button to save to a new file.

Press the save button next to an existing file to overwrite it.

Press the delete button next to a file to remove it.

2.7.2. Open Template / Analysis



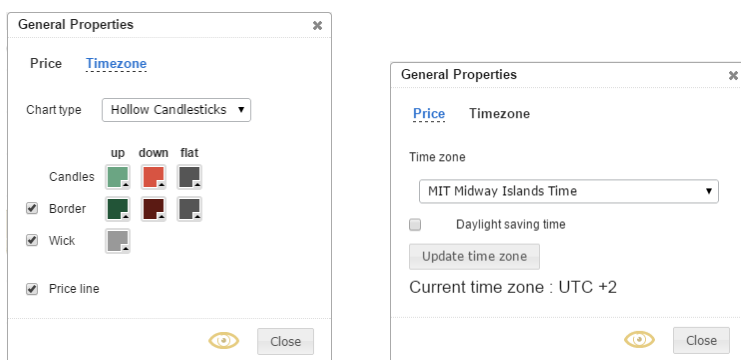
This form let you open your saved chart's studies and drawings, including their parameters and styles.

A **Template** contains only the studies and drawing, while **Analysis** also contains the current symbol and time-scale. Opening an **Analysis** will switch first to the saved symbol and time-scale and then draw the studies and drawing.

Press the open button next to a file name to open this file. Please note that opening a Template or Analysis will remove the existing studies and drawings from the Chart.

Press the delete button next to a file to remove it.

2.7.3. Global Configuration

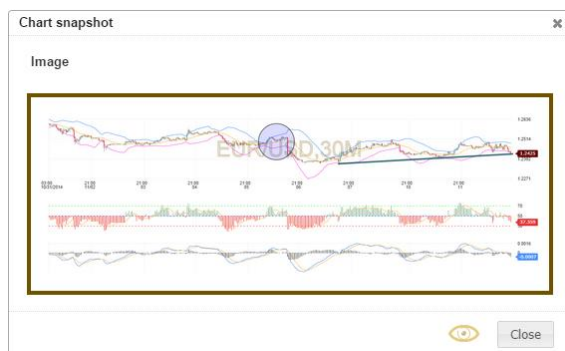


In the first tab you can configure the main price style, such as colors, lines width, transparency, drawing style etc...

The second tab contains the Time-Zone and day light saving configuration.



2.7.4. Screen Shot



This form let you view the chart's exported, PNG image for saving or online sharing.

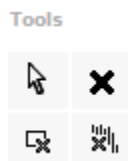


2.8. Toolbox



The toolbox adds additional functionality, such as drawing tools, zooming control, signals configuration and more.

2.8.1. Tools



The "Tools" section adds the following buttons:

- "Cursor" button, which cancels any current drawing.
- "Delete" button, which deletes the selected shape.
- "Delete shapes" button, which deletes all the shapes.
- "Delete studies" button, which deletes all the studies and remove their panels as required.



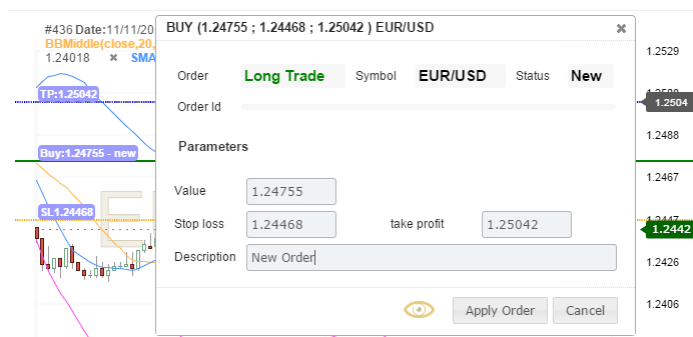
2.8.2. Trade

Trade



The "Trade" section adds the following buttons:

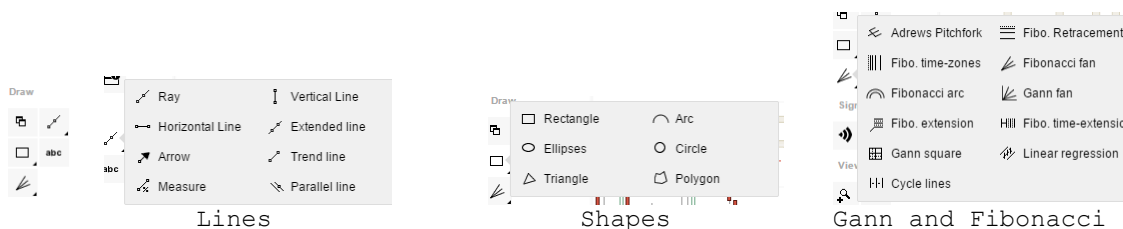
- "Add Long Trade" button, which let you draw a **Long** position on top of the price panel inside the Chart. This drawing will be followed by a form to complete the order and apply it.
- "Add Short Trade" button, which let you draw a **Short** position on top of the price panel inside the Chart. This drawing will be followed by a form to complete the order and apply it.



This is an example for the "Long Trade" order form and the actual trade lines underneath it.



2.8.3. Draw



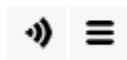
The "Draw" section contains the following buttons:

- "Duplicate" button, which duplicates the selected drawing.
- "Lines", "Shapes", "Text" and "Gann and Fibonacci" buttons, which let you draw technical analysis drawings and texts. Buttons with an arrow in their bottom right side will open a popup with more selection on mouse hover.



2.8.4. Signals

Signal



The "Signals" section contains the following buttons:

- "Configuration" button, which opens the signals configuration form to select the required signals sources and their parameters.
- "Signals List" button, which opens the historical signals special panel to let you browse between the historical signals information.

2.8.5. View

View



The "View" section contains the following buttons:

- "Zoom in" button.
- "Zoom out" button.
- "Pan Chart to the left" button.
- "Pan Chart to the right" button.
- "Full zoom" button, which will zoom on the maximum data range.
- "Restore zoom" button, which will zoom on the default data range.



The view buttons also exist in the middle bottom of the price panel. You can access them by hovering them with the mouse.



3. Chart Sections

This section describes the chart's main sections.


3.1. Symbol and Time-Scale

EUR/USD 4 Hours

The Chart's top left area shows the current symbol and time-scale. Pressing the symbol name enables the search mechanism. Please note that some services may disable this functionality

EUR/		
Markets All ▾ Exchanges All ▾ Countries All ▾		
All	Forex	Indices Stocks Commodities
☆	EUR/AUD	Euro vs Australian Dollar
☆	EUR/CAD	Euro vs Canadian Dollar
☆	EUR/CHF	Euro vs Swiss Franc
☆	EUR/CNY	Euro vs Yuan Renminbi
☆	EUR/CZK	Euro vs Czech Koruna
☆	EUR/DKK	Euro vs Danish Krone
☆	EUR/GBP	Euro vs Pound Sterling
☆	EUR/HKD	Euro vs Hong Kong Dollar
☆	EUR/HUF	Euro vs Forint
☆	EUR/INR	Euro vs Indian Rupee
★	EUR/JPY	Euro vs Yen
☆	EUR/MXN	Euro vs Mexican Peso
☆	EUR/NOK	Euro vs Norwegian Krone
☆	EUR/NZD	Euro vs New Zealand Dollar

3.2. Last Update Time

 11/12/2014 20:32:07

The Chart's top right area shows the last update time signature. The icon to the left of the signature will animate during data updates.

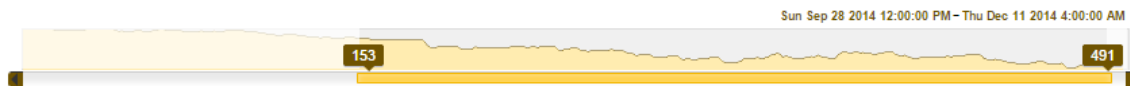
3.3. Localization

Localization

The localization menu let you change the chart's text language.



3.4. Zoom Control



The Chart's bottom area contains the zoom control which let you easily position the zoom left and right boundaries on a specific date range. You can press the left and right buttons to scroll, drag the highlighted area boundaries to change zoom or grab and drag its middle to pan the Chart.

You can also use the middle mouse wheel to zoom in and out or press and drag with the left mouse button inside the price panel to pan the Chart.



4. Panels

4.1. Title

AUD/CAD [hide] [config] [delete] open: 0.9845 high: 0.9845 low: 0.9790 close: 0.9816
Simple Moving Average (close,10): 0.9856 [hide] [config] [delete]
Bollinger Bands (close,20,2): 0.9871 0.9930 0.9812 [hide] [config] [delete]

The panel title contains entries per each of its symbols and indicators. While moving the crosshair you will see the values for a specific date. When the mouse is outside the Chart you will see the last values.

Each study has a hide/show button (👁), configuration (⚙) button and a delete button (✕).

4.2. Panel Ordering and Resizing



The panel's top right area contains three buttons.

The first button replaces the panel with the following panel (▼). Performing it on the last panel will move it to the top.

The second button replaces the panel with the preceding panel (▲). Performing it on the first panel will move it to the bottom.

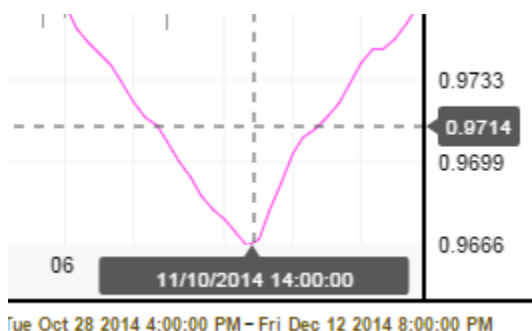
The third button toggle the panel size between maximum and default size (□).

4.3. Splitter

The panel's splitter is located between each two panels. It enables you to resize these panels by clicking and dragging it with the left mouse button.



4.4. Crosshair



The crosshair displays per each point its date and price / study value. While moving the crosshair, the panel title will display the values of each symbol and study based on the crosshair date position.



5. Technical Drawing


5.1. Drawing a Shape

To draw inside a panel first select a drawing tool (shapes, line or text) from the toolbox.

Then click inside the panel to locate the first point.

Move the mouse to locate each following point as required and click to set its location.

To close a polygon you need to click the first point again after positioning all the other points.

Pressing the cursor tool () while drawing will erase the current drawing and stop the drawing session.


5.2. Selecting a Shape



You select a shape by pressing the left mouse button inside its area. While the mouse hovers the shape you will notice its border performing an animation. This animation will let you know which shape is under the mouse and ready for selection.

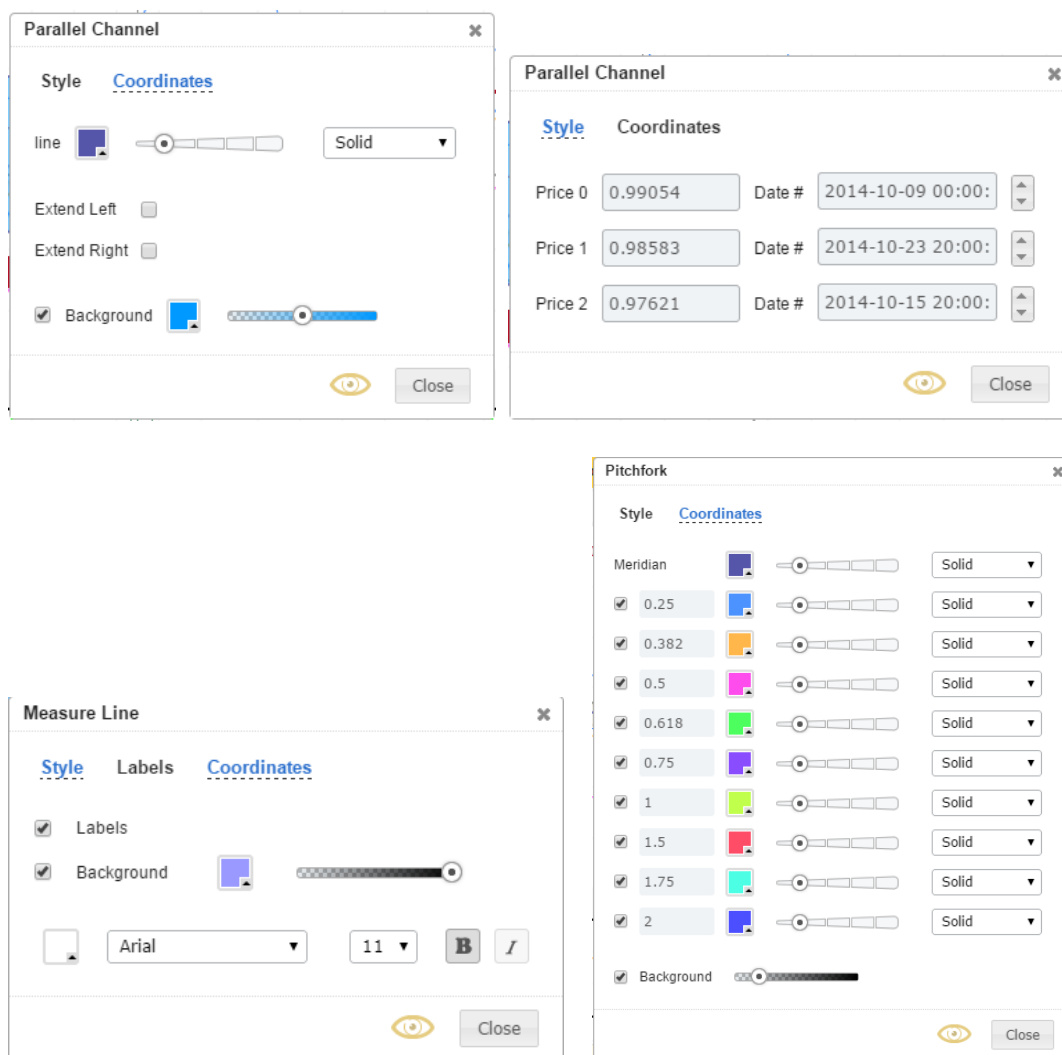
5.3. Move or Resize

To move a shape you need to select it, then press the left mouse button inside it and move the mouse while holding the left mouse button. Release the mouse button to finish moving.

To resize a shape you need to select it, then press the left mouse button inside a handle () and move the mouse while holding the left mouse button.

Release the mouse button to finish resizing.

5.4. Edit



Double clicking a shape will open its editing form.



5.4.1. Style

The "style" tab enables you to edit the shape's colors, lines / border width and type, transparency and additional parameters.

Some shapes have additional options:

- Lines have extend-left and extend-right options, which render them regardless of their handle position until the left / right edges of the panel.
- Some shapes have background color and transparency control.



- Special shapes like Fibonacci or Gann let you show or hide some of the lines (levels) and edit their values.

5.4.2. Coordinates

The "Coordinates" tab let you position each point on a specific date and value.

5.4.3. Labels

The "Labels" tab enables you to edit each label's font (name and size), color, background color and style (bold and italic).



6. More Chart Actions

6.1. Horizontal Zooming

To change chart's horizontal zoom you press the left mouse button inside the data axis and move the mouse cursor left to zoom-in or right to zoom-out.

6.2. Vertical Zooming

To change a panel's vertical zoom you press the left mouse button inside its value axis and move the mouse cursor up to zoom-in or down to zoom-out. After changing the vertical zoom the Chart will stop the automatic vertical scaling of this panel until you change a symbol or time-scale. To restore automatic vertical scaling double click the value axis.

6.3. Horizontal Moving

To move a panel's content horizontally press the left mouse button inside the panel's area (not inside a shape) and move the mouse cursor left or right.

The zoom control will reflect the new zoom range.

6.4. Vertical Moving

The following action enables after changing the value axis scale (section 6.2). Restoring auto-scale will disable this action.

To move a panel's content vertically press the left mouse button inside the panel's area (not inside a shape) and move the mouse cursor up or down.

To restore automatic vertical scaling double click the value axis.